

Name: _____

Date: _____

Period: _____

Mitosis Test A

1. The most important cell activity is _____.
2. 3 reasons why #1 (answer) is the most important cell activity.
 - A. Cells wear out and _____
 - B. New cells allow _____
 - C. New cells allow _____
3. Prokaryotic cells divide through _____ which is _____ into two.
4. Eukaryotic cells divide through _____ which is cell _____ in which two new _____ cells are formed with the same number of _____ as the _____ cell.
5. These three things happen during interphase:
 - A. Time before _____
 - B. Cell _____
 - C. Genetic material is _____
6. The main difference between plant and animal cells in mitosis is: _____
7. Define cancer: _____.
8. 1 in _____ develop cancer.

9. 1 in _____ die from cancer.

10. Cancer is the _____ leading cause of death in the **United States**.

11. _____ gene kills cancer cells.

12. There are _____ (number) types of tumors.

13. One type of tumor is _____ and that tumor _____
_____.

14. _____ -- anything that causes cancer.

15. There is no _____ for cancer.

16. 3 treatments for cancer are:

A. _____

B. _____

C. _____

17. 3 causes of cancer are:

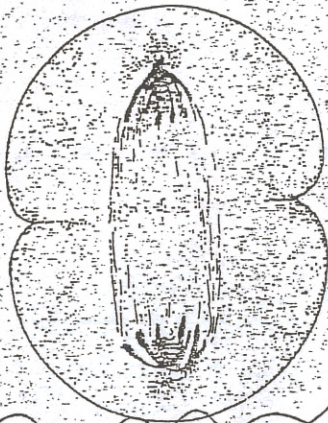
A. _____

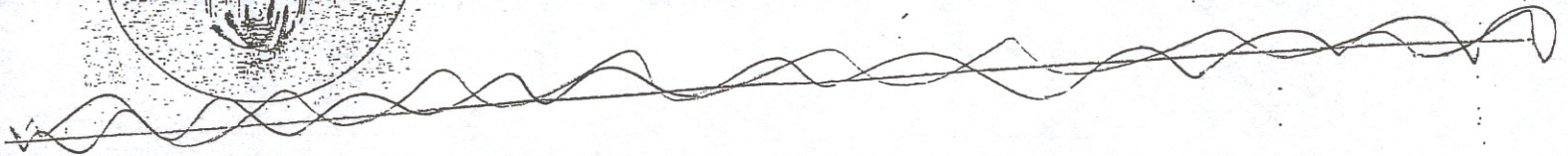
B. _____

C. _____

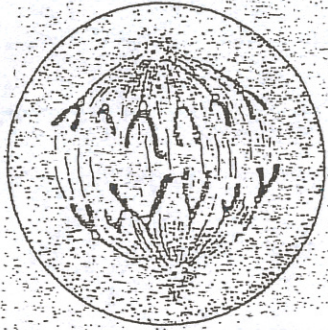
Label the phase and explain what is happening

18.



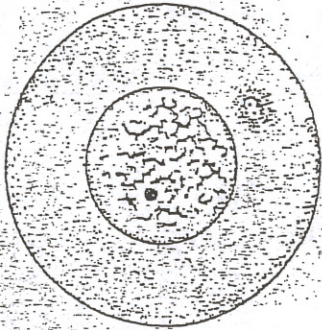


19.



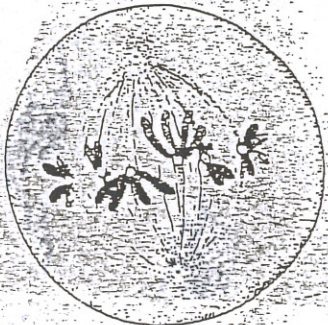


20.

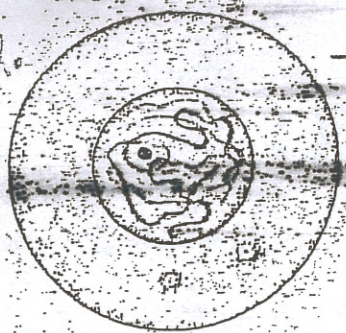




21.



12.



Four horizontal lines for writing.



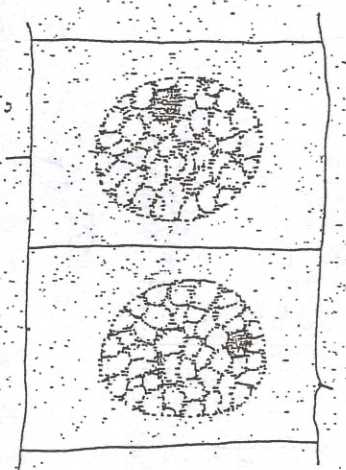
13.



Four horizontal lines for writing.



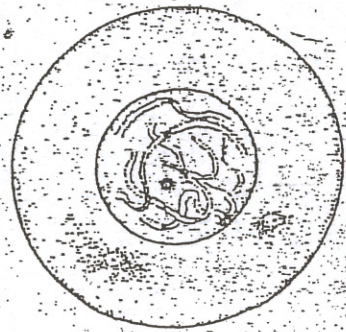
14.



Four horizontal lines for writing.



15.



Four horizontal lines for writing.

Mitosis Phase Word Bank:

Interphase	Metaphase
Prophase	Anaphase
Prophase	Telophase
Prophase	2 Daughter Cells

Mitosis Phase Explanations Word Bank:

Parent Cell	Chromatids joined at centromere
Chromosomes split apart	Cell plate
Cytokinesis	Spindle bundle
Nuclear membrane disappears	Cell grows
Chromosomes completely apart	Chromatids coiled up
Chromosomes in middle	Time before mitosis begins
Genetic material is copied	Cytoplasm divides